

1.1 CCCH Channel Frequency List Update Procedure

The CCCH channel list has to be updated when Thuraya Network Systems changes the frequencies used by the satellite network.

A PC with Windows XP and USB is required for updating the CCCH channel list stored in the “Thuraya DSL320 Maritime Antenna”.

The process for updating the channel list is:

1. Switch on the “Thuraya DSL320 Maritime Antenna” if it is not already in use.
2. Download the channel update program from the SpaceCom website (see section 1.1.1).
3. Check the revision date in “readme.txt” file in the distribution. Proceed only if a new channel list has been issued.
4. Remove the USB cover on the side of the junction box and connect the PC to the USB connection on the junction box (see Figure 1).
5. Install the USB driver, if not installed previously (see section 1.1.2).
6. Run the channel update program (see section 1.1.3)
7. Switch the antenna power off and on (the switch is located on the side of the junction box) to force the antenna to search for the new channels.

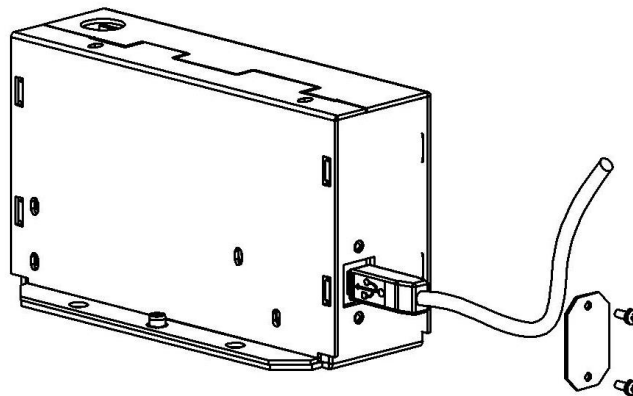


Figure 1. Open the USB cover on the side of the junction box to connect the USB cable to the junction box.

1.1.1 Downloading the Channel Update Program

1. Download from the from the SpaceCom website (www.spacecom.dk/thuraya-channel-list).
2. Unzip the files and check the revision date in “readme.txt”.

1.1.2 Installing the USB driver

A USB driver has to be installed the first time the junction box USB interface is connected to a PC. Driver can be downloaded here:

https://www.silabs.com/Support%20Documents/Software/CP210x_VCP_Windows.zip

The “Found New Hardware Wizard” will pop up and guide you through the process. Please use the “Windows Update” to search and install the driver as shown below and follow the guidelines in the wizard (the wizard will run twice):



Figure 2. The "Found New Hardware Wizard". Enable the Windows Update search and press "Next".

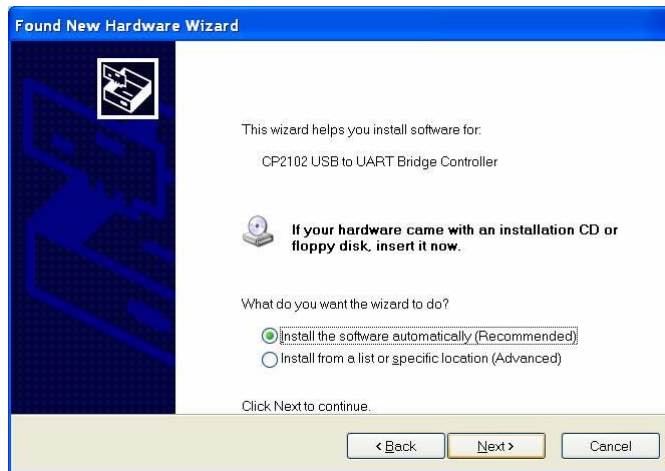


Figure 3. Select "Install the software automatically" and press "Next".

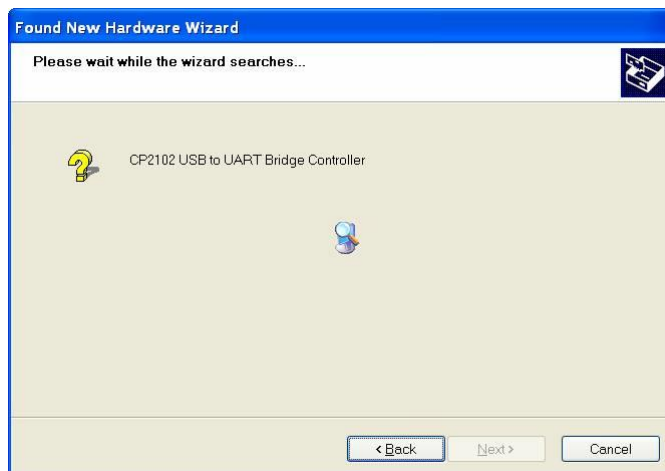


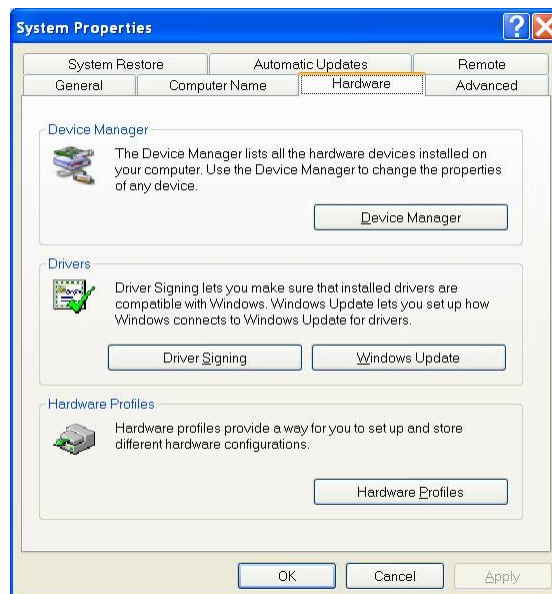
Figure 4. The Windows Update finds the driver.



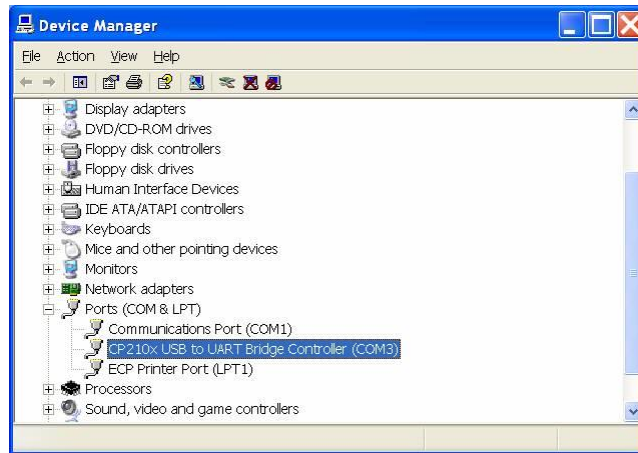
Figure 5. The driver installation is completed.

1.1.3 Updating the Channel List

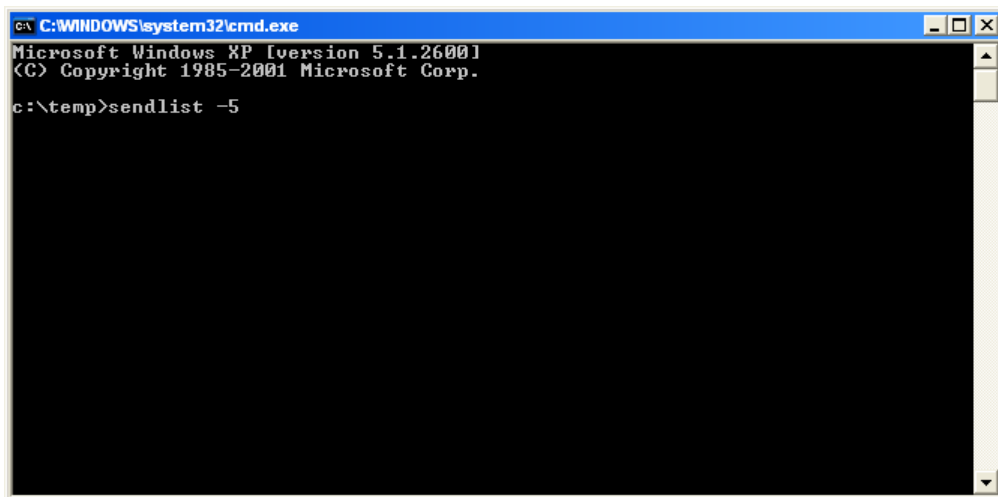
- Determine which COM port is used for the UART Bridge Controller using the Windows System properties window:
 1. Open the “System Properties” in the “Control Panel”.
 2. Press the “Device Manager” button:



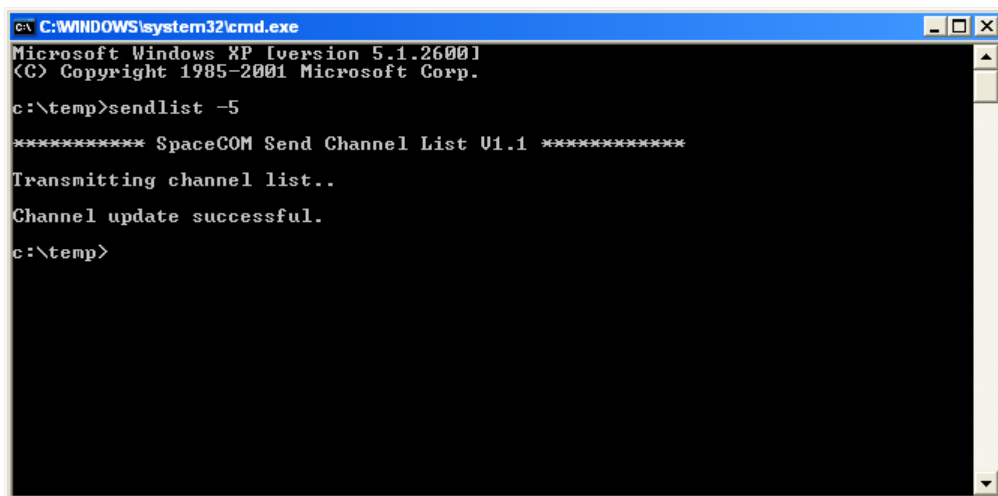
3. Find the “CP210X USB to UART Bridge Controller” and locate the COM port number (The COM port number is 3 in the example):



- Open a command line tool and run the program using the syntax: “sendlist –PORT” where PORT is the COMPORT number found previously (COM5 is used in the example below):



The channel update program shows if the update was successful:



- The channel list update is now complete. Switch the antenna power off and on to force a CCCH channel frequency scan with the new frequencies.